

CANYON COUNTY FAIR EXPO CENTER

CALDWELL, IDAHO

CONCEPT DESIGN REPORT
NOVEMBER 21ST, 2019

Approved By:	
Signature:	<div></div>
Printed Name:	<div></div>
Date:	
Description	

PRECEDENTS/

PRECEDENTS/ MULTI-PURPOSE AND EXPOSITION CENTERS



PRECEDENTS/ METAL BUILDING CLADDING



PLANS/

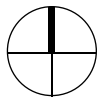
PLANS/ SITE PLAN

SCALE: 1" = 50'-0"



PLANS/ LEVEL 01

SCALE: 1" = 30'-0"



ROOM SCHEDULE

ROOM NAME	AREA
ENTRY	
VESTIBULE	266 SF
VESTIBULE	74 SF
VESTIBULE	99 SF
EXHIBIT HALL	
EXHIBITION HALL	29431 SF
GALLERY/ CIRCULATION	
PRE-FUNCTION LOBBY	3585 SF
WEST GALLERY	2070 SF
SOUTH GALLERY	1019 SF
OFFICE	
MEETING	608 SF
MANAGER OFFICE	186 SF
TICKETING	110 SF
MEETING	609 SF
BOARDROOM	609 SF
GENERAL OFFICE	442 SF
RECEPTION	141 SF
ANTEROOM	140 SF
OFFICE	152 SF
RESTROOM	
WOMEN'S RESTROOM	872 SF
MEN'S RESTROOM	773 SF
TOILET	50 SF
FAMILY	76 SF
SUPPORT	
STORAGE	631 SF
FIRE RISER	70 SF
ELEC/ DATA	259 SF
JAN/UTILITY	246 SF
STORAGE	701 SF
	43219 SF

DEPARTMENT LEGEND

- ENTRY
- EXHIBIT HALL
- GALLERY/ CIRCULATION
- OFFICE
- RESTROOM
- SUPPORT

MATERIALS/

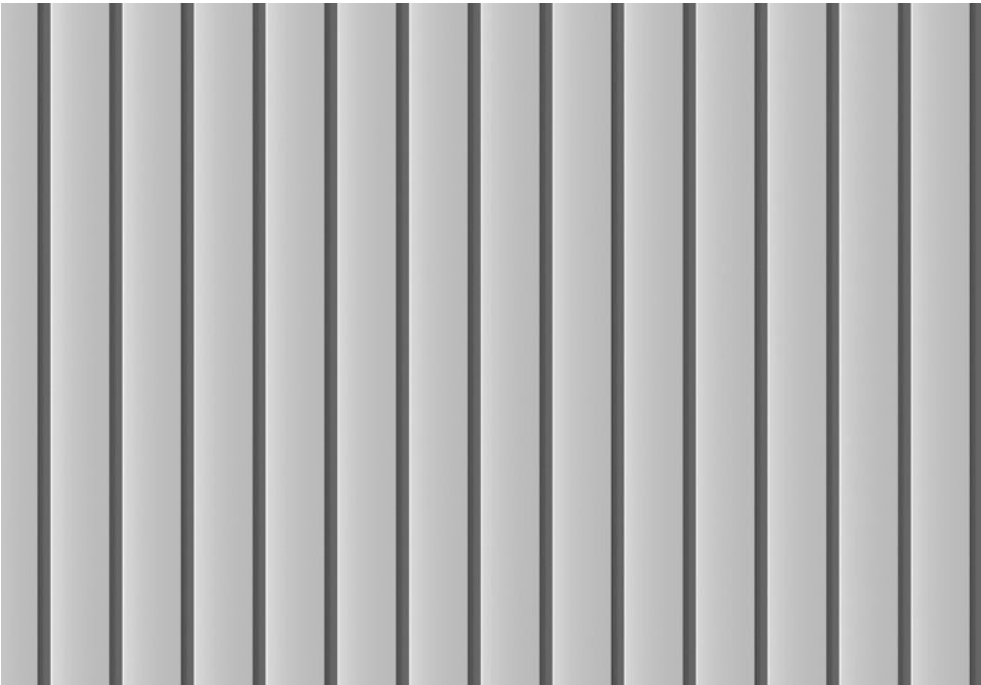
MATERIALS/



METAL SIDING, LIGHT GRAY



METAL SIDING, DARK GRAY



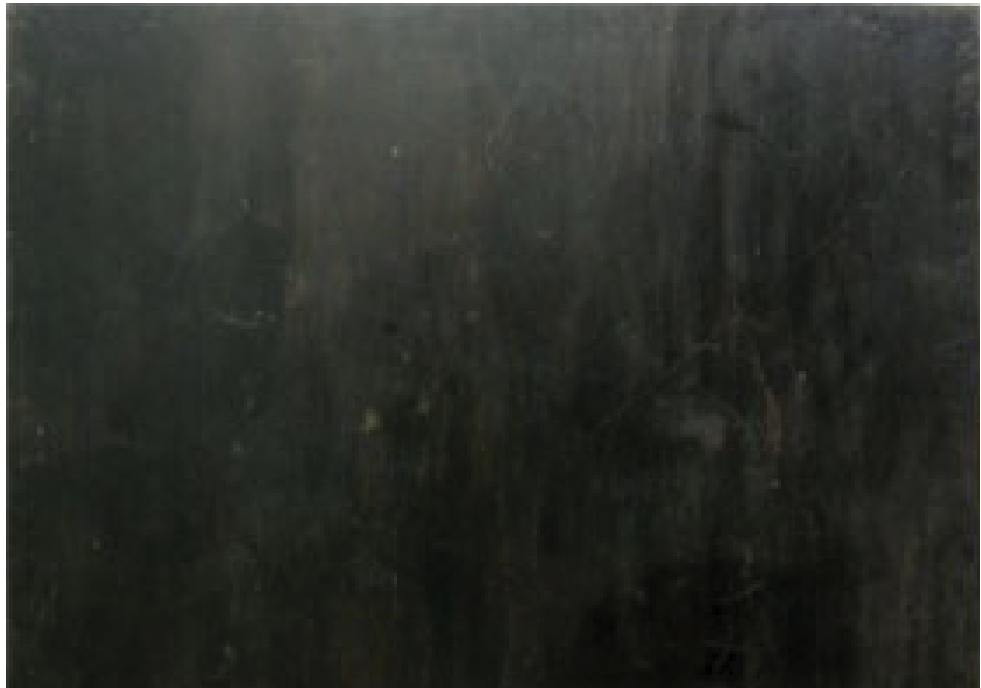
STANDING SEAM ROOF



MANUFACTURED STONE



WOOD DECKING



EXPOSED STEEL, PAINTED BLACK

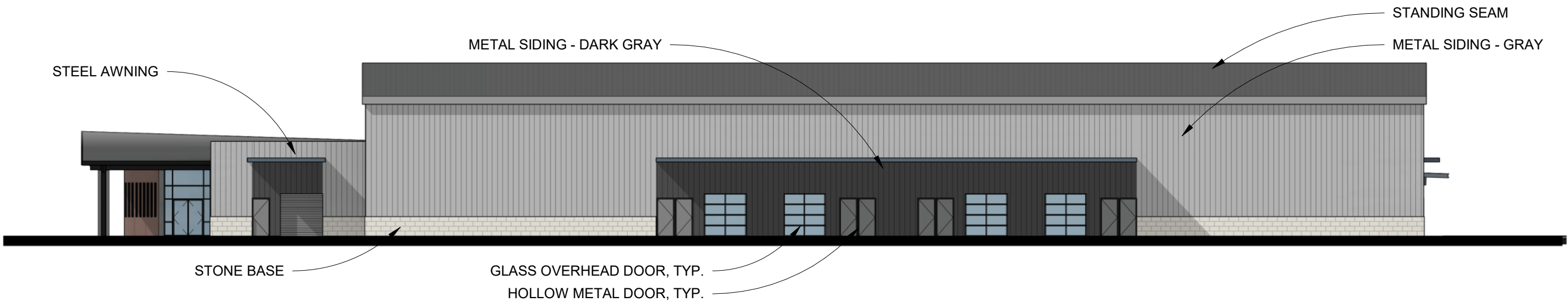
ELEVATIONS/

ELEVATIONS /

SCALE: 1" = 20'-0"



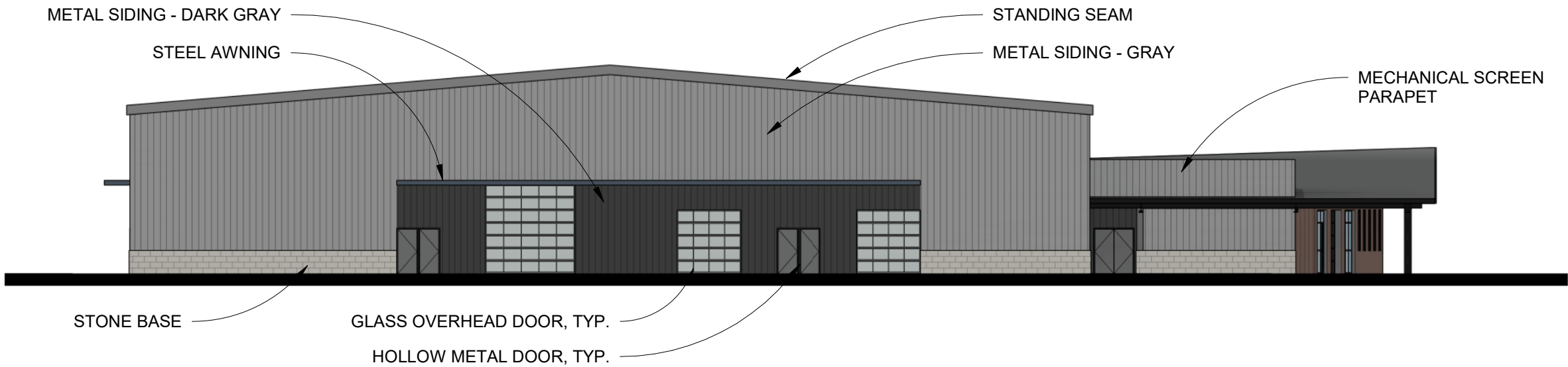
WEST ELEVATION



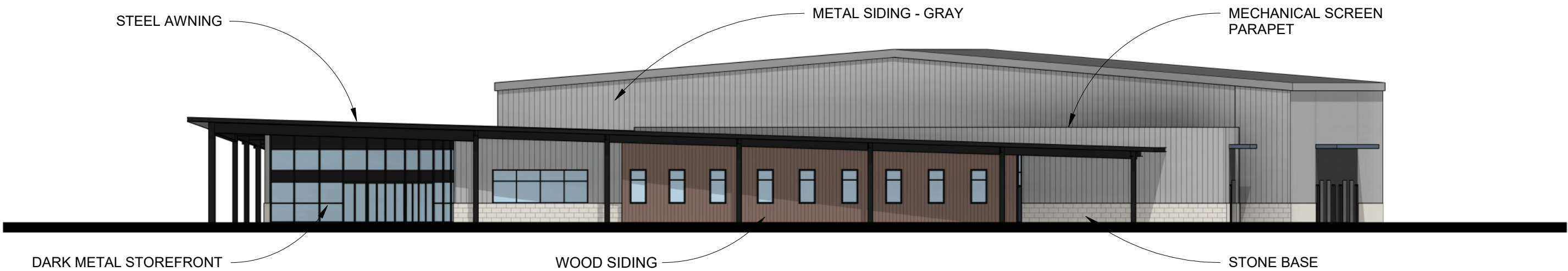
EAST ELEVATION

ELEVATIONS/

SCALE: 1" = 20'-0"



NORTH ELEVATION



SOUTH ELEVATION

PERSPECTIVES/

PERSPECTIVE/ FOOTBRIDGE



PERSPECTIVE/ COVERED ENTRY



PERSPECTIVE/ COVERED EVENT AREA



THANK YOU/